

# Flow Cytometry Studies – Instructions for Using RPMI Media

## What is RPMI?

RPMI is a media for holding tissue for possible Flow Cytometry studies.

**When do you use it?** Typical usage is for lymph node tissue or any surgical case where the potential diagnosis is to rule out lymphoma.

**Do I use the whole container for one specimen?** ABSOLUTELY NOT! The media is very costly, and only a small amount is needed per case. Pour some of the media into a pour off tube, a dilution vial, or even a capped urine cup (use just enough to cover the sample if you do not have a small container).

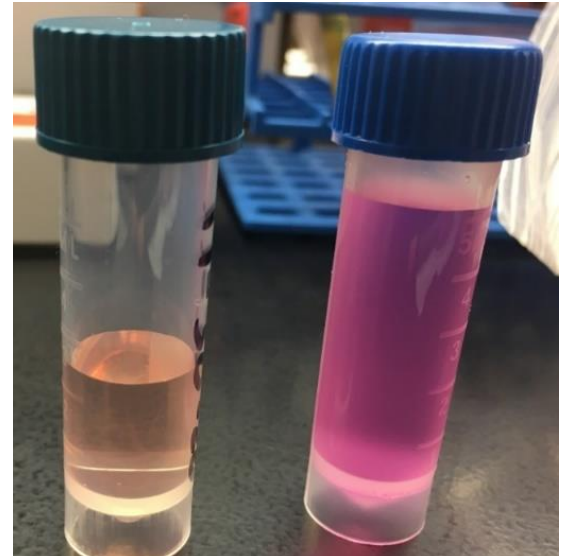


Figure 1: Normal (Peach) and Degraded (Bright Pink)

**How do I store the container of RPMI?** The container should always be refrigerated and protected from light. Once the seal is broken, and some of the media is poured out, the lid needs to be sealed immediately to avoid exposure to air.

The RPMI preservative will start to degrade once exposed to air. Any RPMI that is Bright Pink should be discarded and not used.



Figure 2: Degraded (Bright Pink)

## If I have any questions, who can I call?

Flow Cytometry Department at (515) 241-6510 or Histology Department at (515) 241-6694