

Respiratory Virus Collection by Swab Quick Guide

Equipment Needed



Item 1: Universal Viral Transport 3mL Swab



Other items needed:

Gloves and patient identification label for sample or computer generated computer order label

Use for Respiratory virus testing on specimens collected from nasopharyngeal

- ◇ Influenza A & B Antigen
- ◇ Respiratory Syncytial Virus (RSV)
- ◇ Bordetella pertussis by PCR
- ◇ Respiratory Film Array Panel

Influenza A, Influenza B, Influenza H1N1; Respiratory Syncytial Virus (RSV); Adenovirus; Parainfluenza 1, 2, 3, 4; Bordetella Pertussis; Chlamydia pneumonia; Coronavirus 229E, Coronavirus NL63, Coronavirus OC43, Coronavirus HKU1; Human Rhinovirus/Enterovirus; Mycoplasma pneumonia; Human Metapneumovirus

Collection Instructions for Universal Viral Transport Swab

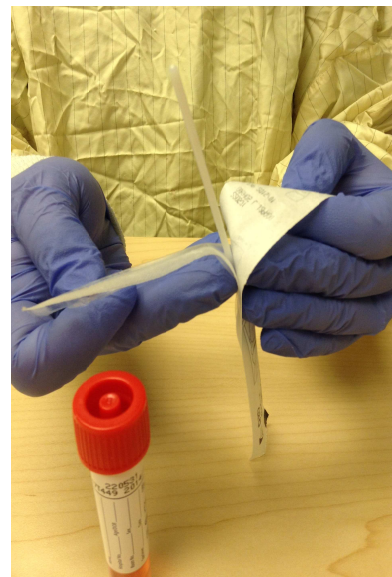


Figure 1: Gather collection device. Remove swab from packaging.

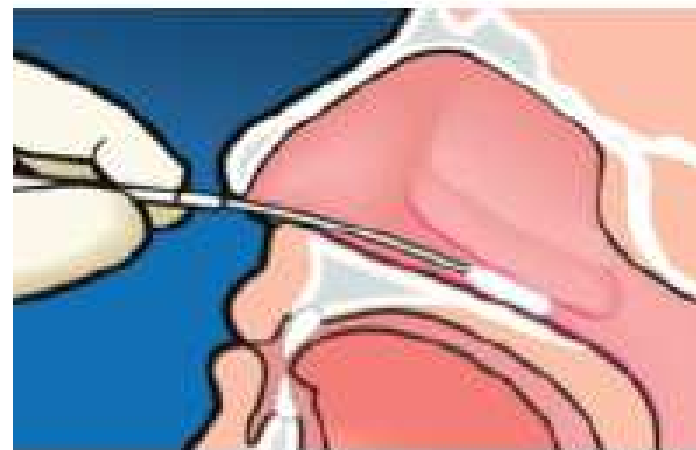


Figure 2: Perform Nasopharyngeal collection per standard medical procedure. Only one nares collection is necessary.

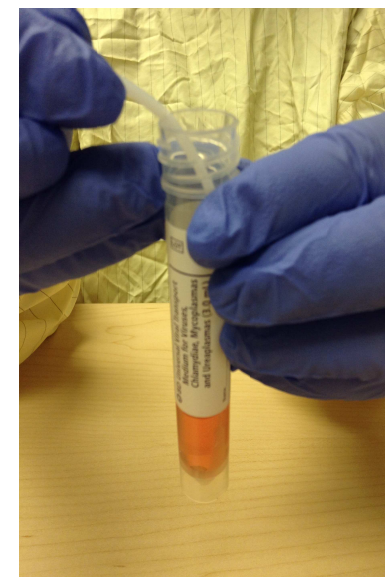


Figure 3a: Place swab into container. Bend the swab.

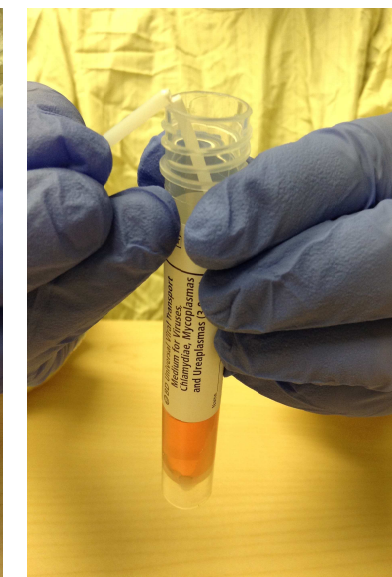


Figure 3b: Bend until it breaks.



Figure 3c: Throw away broken off piece in trash.

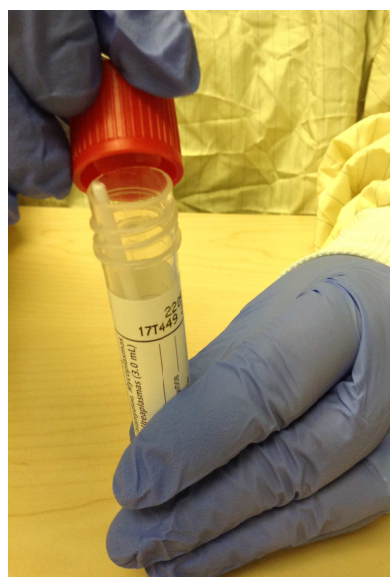


Figure 4a: Place cap on the specimen. Swab will "click" into cap.

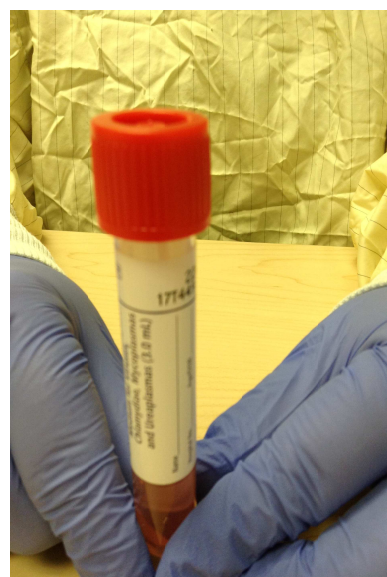


Figure 4b: Twist to secure cap to vial.



Figure 5: Label sample with patient chart label or computer generated order label

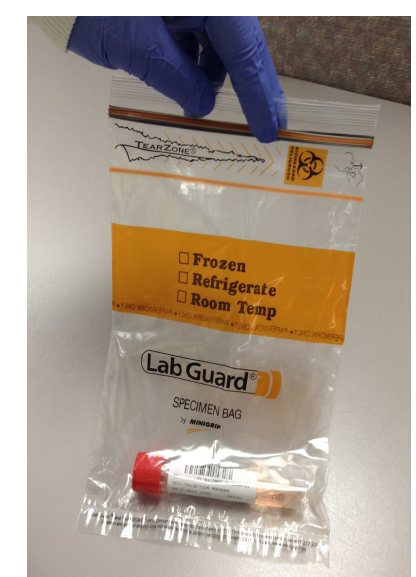


Figure 6: Place in biohazard bag and transport to the laboratory